

Alaska Department of Fish and Game

Habitat Section
Southeast Region



112-13-10060-2015 Tributary 1

ADDITION

Water body name:

Survey date: 8/25/2022

Quad: Sitka D-4

Species & Lifestage:

Upper Reach Latitude: 57.989401 **Longitude:** -135.049217

Survey crew: RR, FC

Lower Reach Latitude: 57.991947 **Longitude:** -135.056435

Findings: We surveyed this uncataloged stream using a backpack electrofisher and GPS. We captured juvenile coho salmon, Dolly Varden, and cutthroat trout. The tributary stream has some subterranean flow upstream and falls over several log jams and rootwads prior to flowing through a culvert with a 1 ft perch and connecting to the main channel (Table 1; Figures 1–4).

Recommendations: Add this uncataloged stream to the anadromous waters catalog for rearing coho salmon (Figure 5).

Nomination: Pending

Table 1.—112-13-10060-2015 tributary 1 survey data.

Waypoint	Latitude	Longitude	Notes	Stream Width ft	Stream Substrate	Habitat Features	Gradient %	Sample Effort	Sample Results
1561	57.990167	-135.053587	3' arched-bottom culvert, 1' perch into a large 1-2' deep jump pool. Well-aligned with stream and has a low gradient throughout. Two coho caught at outlet as well as at the inlet.	6-8	Large Gravel Cobble		2-4	EF	4 CO 1 DV
1568	57.989971	-135.052318	Advancing upstream, good rearing habitat but has many 1-2' log jams/rootwad falls on way from last waypoint.	2-4	Fine Organic Small Gravel		2-4	EF	1 CO 4 DV 1 CT
1569	57.989805	-135.051220	Tributary off of main on river-left.	6-8	Small Gravel Large Gravel	Spawning Substrate	2-4	EF	2 CO
1573	57.989830	-135.050687	3-4' rootwad falls without a jump pool. Coho were caught both upstream and downstream.	4-6	Large Gravel Small Gravel		2-4	EF	3 CO
1574	57.989532	-135.049556	Small tributary on river-right, not fished. Could be potential habitat during high flow seasons.					Not Fished	
1575	57.989405	-135.049238	Main channel goes subsurface and resurfaces 75-100' upstream. Coho were caught just downstream of subsurface flow at this point.					EF	2 CO
1576	57.989294	-135.048870	Residential fish capture upstream of subsurface flow.					EF	4 DV 2 CT



Figure 1.—Juvenile coho salmon captured at waypoint 1561.



Figure 2.—Perched culvert outlet at waypoint 1561.



Figure 3.—Tributary 1 just downstream of subterranean flow at waypoint 1575.



Figure 4.—Streamflow going subterranean at waypoint 1575.

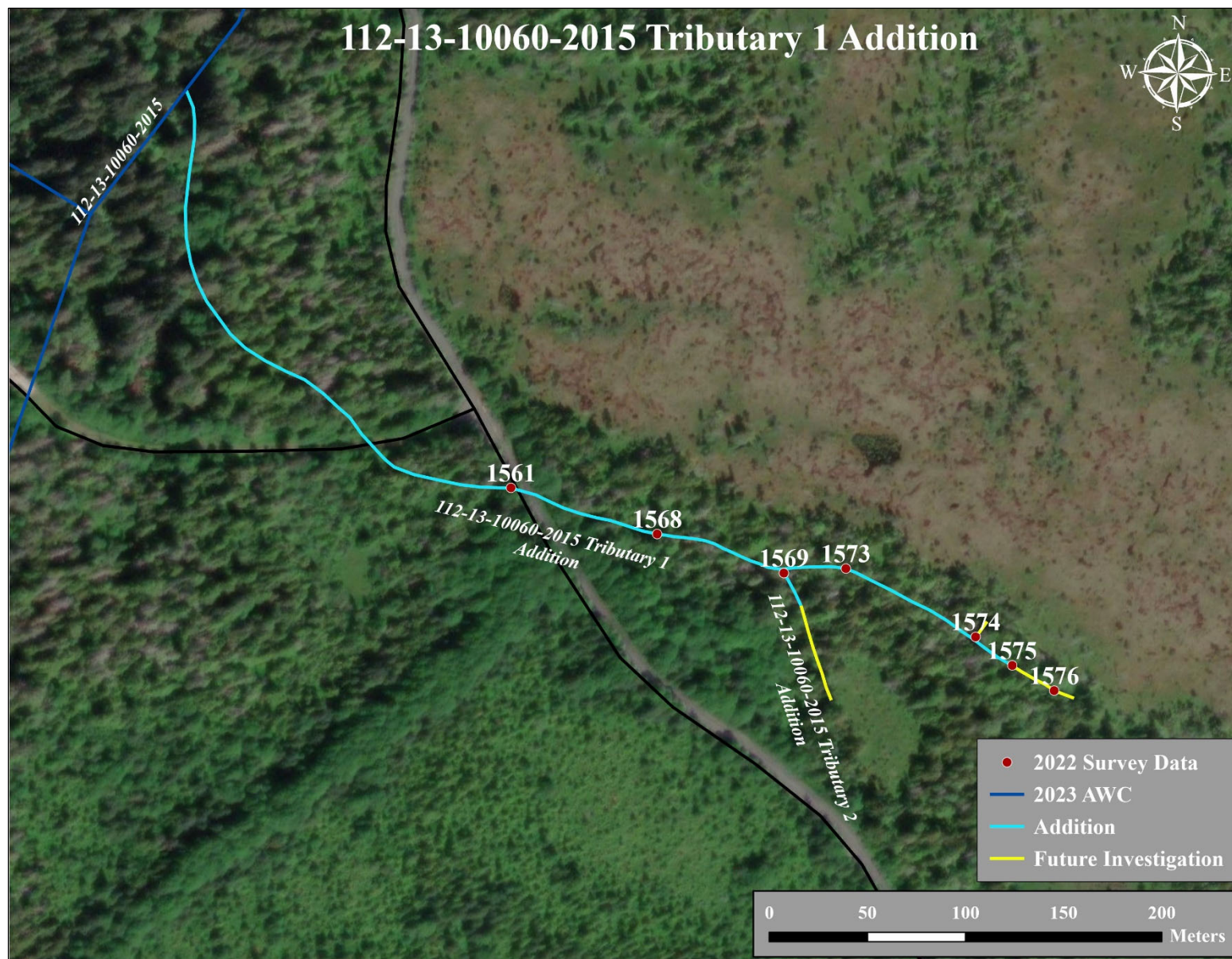


Figure 5.—112-13-10060-2015 tributary 1 addition map.